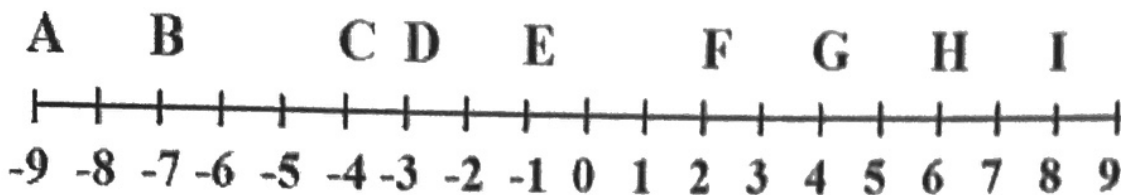
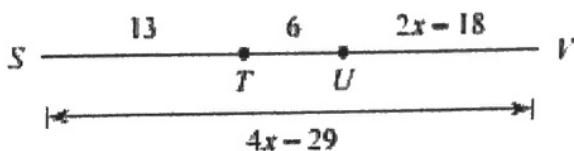


Use the diagram below to answer the questions 1-4.
 Show the calculation that you used to obtain your answer.



1. What is the distance between points C and H? $|-4 - 6| = 10$
2. What is the distance between points I and A? $|8 - (-9)| = 17$
3. What is the distance between points G and C? $|4 - (-4)| = 8$
4. What is the distance between points B and G? $|-7 - 4| = 11$

5. Solve for x.



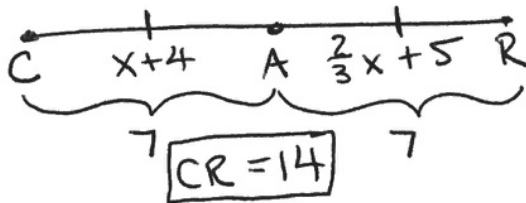
$$13 + 6 + 2x - 18 = 4x - 29$$

$$2x + 1 = 4x - 29$$

$$30 = 2x$$

$$\boxed{15 = x}$$

6. A is the midpoint of \overline{CR} . If $CA = x + 4$ and $AR = \frac{2}{3}x + 5$, find the length of \overline{CR} .

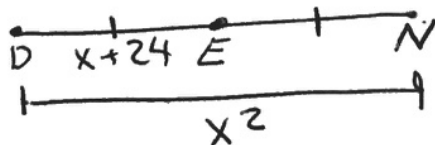


$$x + 4 = \frac{2}{3}x + 5$$

$$3 \cdot \frac{1}{3}x = 1 \cdot 3$$

$$x = 3$$

7. E is the midpoint of \overline{DN} . If $DN = x^2$ and $DE = x + 24$. Solve for the positive value of x.



$$2(x + 24) = x^2$$

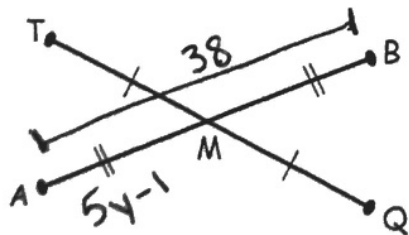
$$2x + 48 = x^2$$

$$0 = x^2 - 2x - 48$$

$$0 = (x - 8)(x + 6)$$

$x - 8 = 0$	$x + 6 = 0$
$\boxed{x = 8}$	$x = -6$

8. If $AM = 5y - 1$, $AB = 38$, find the value of y.



$$2(5y - 1) = 38$$

$$10y - 2 = 38$$

$$10y = 40$$

$$\boxed{y = 4}$$